

## Bourdon Tube Pressure Gauge

Fig. 1100

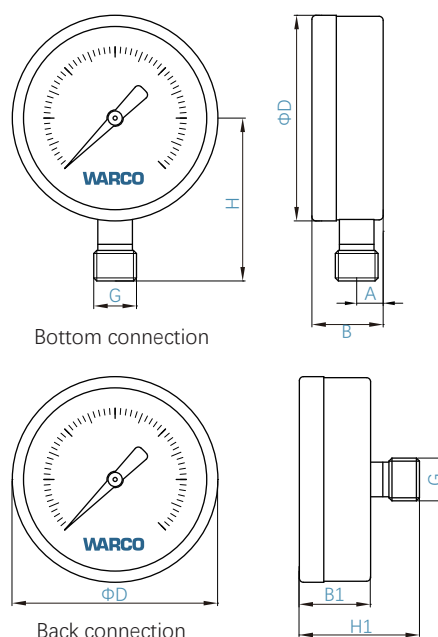
### Specification

Design in accordance with BS EN837-1,GB/T1226  
Scale range conforms to EN 837-1/5  
Thread comply with ISO228/1  
Testing standards comply with BS EN837-1,GB/T 1226

### Technical data

**Normal size:** 40,50,63,100,150,200,250mm  
**Connection size:** 40mm: 1/8" BSP  
50,63mm: 1/4" BSP  
100 ~ 250mm: 1/2" BSP  
**Scale range:** Pressure: 0 ~ 0.6,1,1.6,2.5,4,6,10,16,25,40,60,  
100,160,250,400 bar  
Vacuum: -1~0 bar  
Compound: -1 ~0.6,1.5,3,5,9,15,24 bar  
**Operating temperature:** Ambient: -40°C ~ +60°C  
Medium:60°C Max.  
**Accuracy class:** 40,50,63mm :2.5  
100,150,200,250mm:1.6  
**Options:** NPT、BSPT or other process connection thread  
Restrictor (RS)  
Special face design  
Suitable for oxygen, free of oil and grease  
Double dial range or other dial ranges  
Acrylic windows  
Chrome plated steel housing, brass housing,  
stainless steel housing

### Schematic



### Material Specifications

Part Name	Materials	Specification
Casing	Carbon Steel	Painted black steel
Bezel ring	Carbon Steel	Painted black steel
Window	Instrument Glass	-
Connection	Brass	-
Movement	Copper Alloy	-

### Dimensions

DN		ΦD	B/B1	A	H	H1	G
mm	inch						
40	1-1/2"	42.5	23/24.5	8	37	39	BSP 1/8"
50	2"	53	28/27.5	10	46	47	BSP 1/4"
63	2-1/2"	63.5	28	10	52	47	BSP 1/4"
100	4"	100.5	35	13/15.5	80	59	BSP 1/2"
150	6"	150	49	18	114	-	BSP 1/2"
200	8"	200	49	18	144	-	BSP 1/2"
250	10"	250	50	19	175	-	BSP 1/2"

WARCO reserves the right to change dimensions without notice.

## Pressure Gauge Fittings

Fig. 1000

### Specification

Thread comply with ISO228/1

### Technical data

**Length:** 240mm ,138X138mm

**Connection:** BSP 1/2"

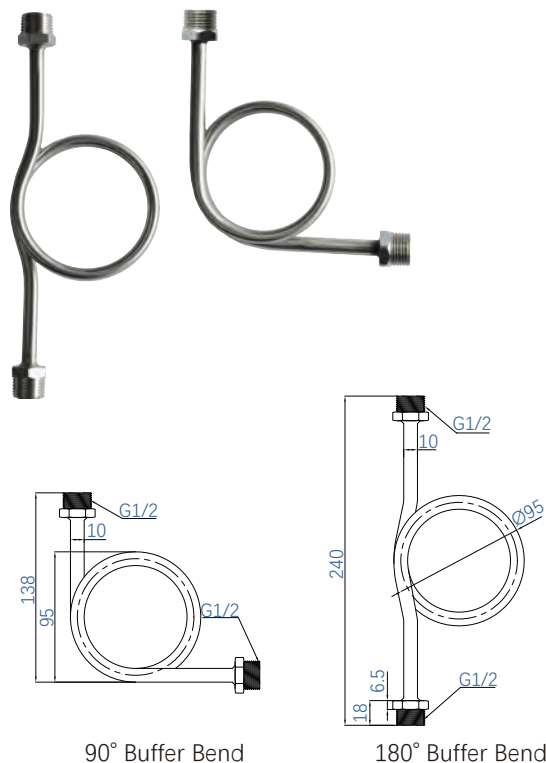
**Form:** Straight form, 90° angled.

**Material Specifications:** SS304

**Pipe diameter:** 10mm

**Options:** Other threaded connections and female connections

### Schematic



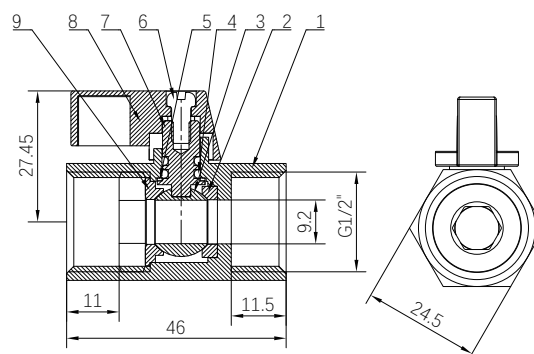
### Specification

Thread comply with ISO228/1

Norminal size: DN15mm (G1/2")

### Material Specifications

Part Name	Materials	Specification
Body	Brass	-
Ball	Brass	-
Seat	PTFE	-
Handle	Aluminum alloy	-
Sealing ring	PTFE/EPDM	-



WARCO reserves the right to change dimensions without notice.